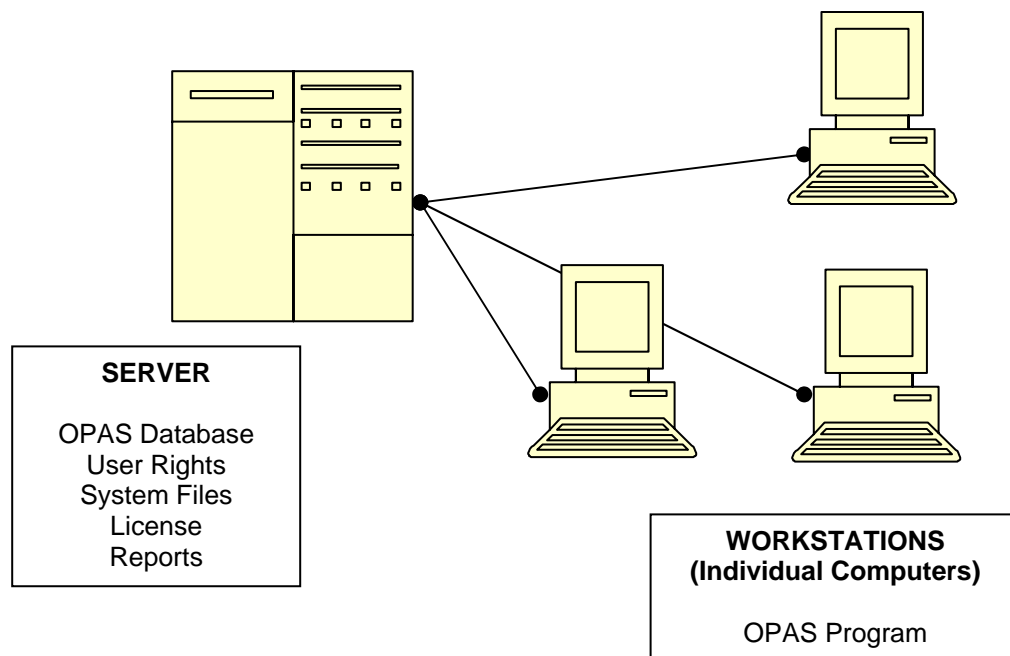


OPAS INSTALLATION – CLIENT/SERVER CONFIGURATION

Overview

In a 'Standard' installation of OPAS, the OPAS executable (OPAS.EXE) resides on the server. Workstations access that executable via a mapped drive. However, to improve performance and reduce network traffic, this 'Alternate' Installation can be effectively employed.

Using this installation method, the OPAS Program (OPAS.EXE) resides on each local workstation. OPAS then runs from that local computer and accesses the OPAS Database, System settings, User information (Passwords and Permissions), and Reports on the Server. This installation method can improve performance on older computers and slower networks as it eases network traffic and takes advantage of the processing power of the local workstation.



These important considerations must be taken into account:

1. When updates are made to OPAS, they must be made on each local workstation (each computer that uses OPAS) as well as the Server – the OPAS.EXE versions must always match.
2. You still need a mapped drive to the server where OPAS is installed, and the local workstation still needs full read/write access to that drive.
3. This method does *not* imply that OPAS is designed to run over a WAN (Wide Area Network). OPAS is specifically intended for a LAN (Local Area Network) and this installation option is merely intended to improve performance on a LAN.

Procedure

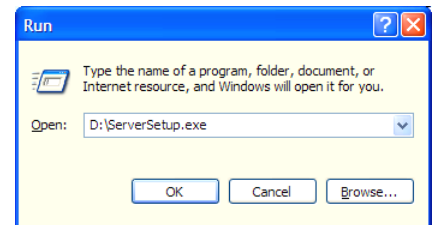
The procedure outlined below reflects a basic OPAS installation using the default OPAS FoxPro database.

- **Step 1 – Install OPAS on the Server**

The procedure should take 5-10 minutes

The OPAS program files are installed on the Central Server by running the file called **ServerSetup.exe**. To do this:

1. Make sure the OPAS CD-ROM is in your computer's CD-ROM Drive
2. Click **Start** in the lower left-hand corner of your computer screen and then **Run**
3. In the **Run** field, type D:\ServerSetup.exe *where "D" is the drive letter of your CD-ROM Drive*. For example, if your CD-ROM Drive is letter "H", you would type: H:\ServerSetup.exe. Then click **OK**.
4. At the Welcome screen, click **Next**
5. At the Select Destination Directory screen, accept the default directory of C:\Program Files\OPAS – or select the desired drive and folder on your Server - and click **Next**
6. At the Ready to Install screen, click **Next**.



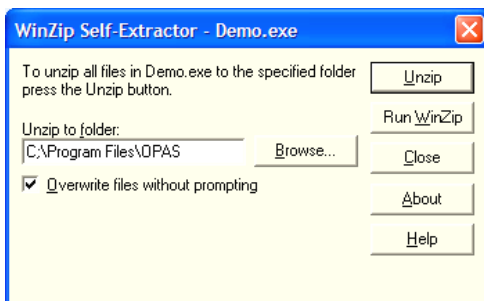
The core OPAS program files will be installed to your Server

- **Step 1A – Install OPAS demonstration database and other files**

The procedure above will have put all the necessary OPAS files in place for a standard OPAS installation. You must now install the OPAS Demonstration database and other OPAS system files that accompany your installation packet. A demonstration database will have been created for you, and this step will also ensure that when you start OPAS, screen settings and permissions are set for optimal use.

The following is done on the Server and the Server alone

1. Make sure the OPAS CD-ROM is in your server's CD-ROM Drive
2. Click **Start** in the lower left-hand corner of your computer screen and then **Run**
3. In the **Run** field, type D:\ **Demo.exe** *where "D" is the drive letter of your CD-ROM Drive*. For example, if your CD-ROM Drive is letter H:, you would type H:\ Demo.exe
4. This action will bring up the window shown here. Assuming you've installed OPAS to the default C:\Program Files\OPAS folder, simply click the Unzip button in the top right of the window to place the temporary database and other files in the designated directory.



- **Step 2 – Share the folders and ensure the drive mapping**

On the server, make sure the entire OPAS folder (the folder to which you installed the program) is shared and that all OPAS users have full Read/Write/Delete access to that Folder.

Even if Users will have read-only access within OPAS itself, they need Read-Write-Delete access to the OPAS directory for the License and other files.

In addition, decide on the Drive letter you will use to map this OPAS folder on the Server to individual computers throughout the organization.

- **Step 3 – Install OPAS on individual computers or workstations**

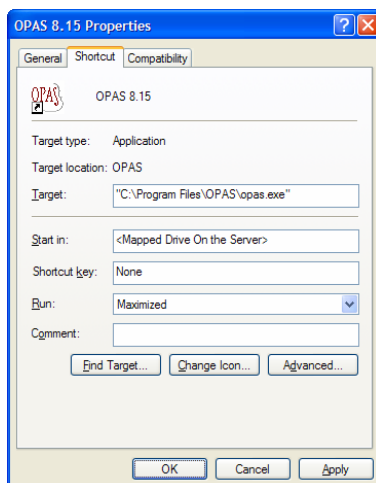
The procedure should take 5-10 minutes on each computer

You must next install the necessary files that allow OPAS to run on the computer by running the file called **WorkstationSetup.exe**.

First, through Windows Explorer, map the OPAS folder on the Server (the folder to which OPAS was installed in Step One) to a unique drive letter. Be sure to use the same letter for all computers.

1. Make sure the OPAS CD-ROM is in the computer's CD-ROM Drive
2. Click **Start** in the lower left-hand corner of your computer screen and then **Run**
3. In the **Run** field, type D:\WorkstationSetup.exe *where "D" is the drive letter of your CD-ROM Drive*. For example, if your CD-ROM Drive is letter "H", you would type: H:\WorkstationSetup.exe. Then click **OK**.
4. At the Welcome screen, click **Next**
5. At the Choose Destination Location screen select the mapped drive for the shared OPAS directory on the server.
6. At the Ready to Install screen, click **Next**.
7. The Workstation Setup routine will copy the necessary files to the computer's Window directory. When finished, you may be prompted to restart or reboot your computer, and should do so.

On each Workstation, when the OPAS Program starts, it knows to "go out to the server" for the required files through the OPAS Icon on the desktop.



Right click the OPAS desktop icon on each workstation and choose "Properties" (the last item on the pop-up menu). On the resulting screen, ensure the settings are as follows:

- The **Target** should be "C:\Program Files\OPAS\OPAS.EXE"
This is the local installation of OPAS on the Workstation
- The "**Start In**" directory is that of the mapped drive of the server. This setting tells the program that as soon as it starts, it should go to that mapped drive on the server to retrieve the license, the data, user rights, etc.

You are now ready to use OPAS! Simply double-click the OPAS desktop icon on any workstation to start the program. When you see the login screen, the Login Name will be DEMO. Simply type the password

"demo" (without the quotes) into the password field and click OK.