

## Changing String Counts

When a work is assigned to an activity it typically does not contain a string complement, as the string forces may be dependent upon the ensemble performing the work or the conductor's discretion. Therefore, the number of string players is usually indicated *after* a work has been assigned to a program.

This OPAS function allows you to add a string complement to all the works on a single program or many programs at once.

Select the activities to which the string complement will be assigned

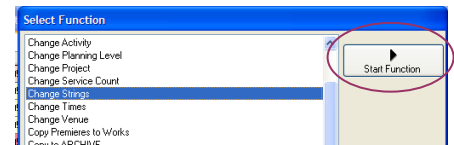
In the **Dates** area of OPAS, use any filtering techniques to isolate a set of rehearsals and performances (feel free to contact OPAS Technical Support if you have questions about this step).

| WedDate    | Start    | End      | Project             | Activity        | Conductor  | Text | Venue        | PW   |
|------------|----------|----------|---------------------|-----------------|------------|------|--------------|------|
| 01/12/2005 | 10:00 AM | 12:30 PM | Subscription Week 5 | Rehearsal       | Ling, Jaha |      | Arlington Md | 2000 |
| 01/13/2005 | 10:00 AM | 12:30 PM | Subscription Week 5 | Rehearsal       | Ling, Jaha |      | Arlington Md | 2000 |
| 01/13/2005 | 02:00 PM | 04:30 PM | Subscription Week 5 | Rehearsal       | Ling, Jaha |      | Arlington Md | 2000 |
| 01/14/2005 | 10:00 AM | 12:30 PM | Subscription Week 5 | Dress Rehearsal | Ling, Jaha |      | Arlington Md | 2000 |
| 01/15/2005 | 08:00 PM | 10:00 PM | Subscription Week 5 | Concert         | Ling, Jaha |      | Arlington Md | 2000 |
| 01/16/2005 | 03:00 PM | 05:00 PM | Subscription Week 5 | Concert         | Ling, Jaha |      | Arlington Md | 2000 |

This will most often be all the activities within a Project, but could also be all activities in a run-out venue for which you require a different string complement.

Run the **Change / Add Strings** function

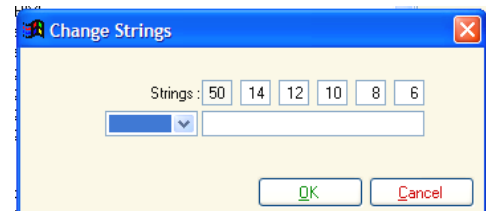
Click the **Function** icon  and choose the **Change Strings** function.



Then click the large "Start Function" button.

Type or select the number of strings

At the next screen either type in the number of strings to be used (shown here) or choose a named string set from the drop-down. Then click the green **OK** button



OPAS will confirm the number of "records" - meaning activities - for which the string complement will be changed. **Be sure** this is the correct number of activities and click **Yes**.

The function will change the string count for all works programmed (except intermissions) and will display a "Function Finished!" message box. Click OK and then Close to exit the function window.

### Notes

You can always go back and change the string count for individual works on a program. Simply double-click that work in the Program grid, then go to the Instrumentation screen and change the strings. Click **OK** and Save those changes to all related dates. This function can be used to quickly augment the string complement for rehearsals in which you may have "cover" string players, and reduce the string complement for smaller venues, family concerts, etc.