

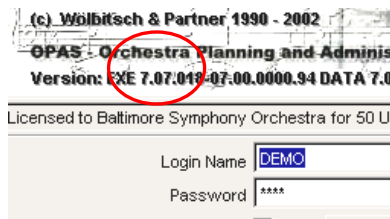
INSTALLING THE OPAS UPDATE

Installation of the OPAS update is a simple and straightforward process. However, please do not hesitate to contact Technical Support with any questions or concerns, or to have a support representative on standby while you run the process.

The Update process does **not** affect your OPAS license, your customized reports, your system settings, your User Names or passwords, or your ODBC connections.

Critical: Before you start the update procedure, you must make a note of the current OPAS version.

To determine your current version, simply start OPAS. At the login screen, make a note of the number circled below. You only need the first 3 digits. Using the example below, your version number would be 7.07. Contact Technical Support if you have any questions regarding your OPAS version.



OPAS TECHNICAL SUPPORT:
Tom Gaitens (919) 380-0172 or tgaitens@fineartsoftware.com

How to find the OPAS Update files

In most cases, the OPAS Update files will be on the Update CD-ROM (in other cases, you will have downloaded the update files from the Internet).

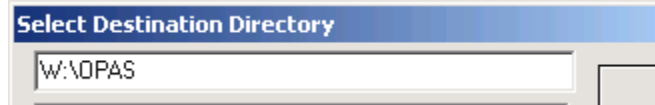
The easiest way to locate the Update files is to:

- Put the OPAS CD-ROM into the CD-Rom drive of your computer
- Double-click the My Computer icon at the top left of your computer screen
- This action will reveal all of the drives on your computer. One of these drives will be your CD-ROM; it's often the drive letter "D" (but not always). The CD-ROM will have a special icon:
- Double-click the CD-ROM icon to reveal the contents of the CD-ROM
- Many of the files here are optional or are provided in the unlikely need of technical support. The main files you will need are called **Update.Exe** and **WorkstationSetup.exe**.

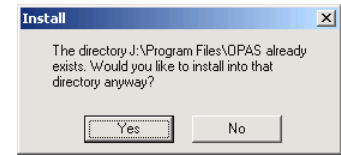
STEP ONE – UPDATE OPAS ON THE SERVER

Estimated Time: 3 – 5 Minutes

1. Make sure everyone is out of OPAS
2. From a workstation that has full read/write access to the server, or on the server itself, double-click Update.exe to start the OPAS Update program.
3. Select U.S. English as the language of installation and click **OK**. At the Welcome screen, click the **Next** button
4. At the **Choose Destination Location** window, click the **Browse** button and locate your OPAS installation on the Server. **Note** – the Update utility may try to put an extra “\OPAS” at the end of the destination directory. Just check the field at the top of the screen and make sure it’s correct before you proceed.



HINT: You'll know you have the right directory location if you see the following message after you click the OK button. This message indicates that you have chosen the **correct** directory



5. At the **Start Installation** window, click Next

OPAS will run the update on your Server and update the program.

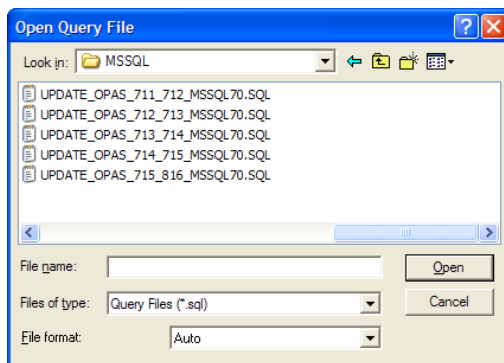
STEP TWO – UPDATE THE OPAS DATABASE SO THAT IT MATCHES THE PROGRAM VERSION

Estimated Time: 5-20 Minutes, depending upon the size of your database

Start **SQL Query Analyzer** (either on its own, or under the Tools menu item in SQL Server Enterprise Manager), and open the update script. All update scripts are stored in the **OPAS\ODBC\MSSQL** folder on the server.

All scripts follow the same format and are named **UPDATE_OPAS_<current version>_<new**

version>_MSSQL70.SQL. The example below would be used to update an OPAS SQL Server database from version 7.12 to version 8.17.



The most critical element in this procedure is to make sure you start with the correct *<current version>* of your OPAS database. This version will match the 3-digit number you noted at the very beginning of this process. SQL Server database updates are done in a strictly sequential manner - it is likely that you will need to run several incremental updates to properly configure your OPAS database.

Note that the ODBC\MSSQL folder will contain many scripts that you do not need; these will be scripts for creating and updating other OPAS SQL Server databases.

Note too that it doesn't matter if you are updating from version 7 to version 8 (i.e. 7.12 to 8.17) that fact is managed in the update scripts for you.

For example, if your OPAS database is version 7.12 and you wish to update to version 8.17, you would run the scripts shown above in this order:

UPDATE_OPAS_712_713_MSSQL70.SQL
UPDATE_OPAS_713_714_MSSQL70.SQL
UPDATE_OPAS_714_715_MSSQL70.SQL
UPDATE_OPAS_715_816_MSSQL70.SQL
UPDATE_OPAS_816_817_MSSQL70.SQL

Click the **Run** icon in Query Analyzer to execute the script. Most scripts take only a few seconds to run, some may take upwards of a minute or two.

STEP THREE – UPDATE OPAS WORKSTATIONS

Estimated Time: 5 Minutes on each workstation

Critical: Before you run any update on a workstation, be sure you have the rights to make changes to the C:\Windows\System folder and/or the C:\WINNT\System32 folder on that workstation. If the workstation uses Windows 2000 that may well mean you need to be logged into that workstation as the Administrator. The OPAS workstation update routine puts new support files into those folders – if you don't have the access rights to those folders, the update won't be successful.

If OPAS is installed on each Workstation

Use this set of steps if OPAS is installed on each workstation (the OPAS.EXE resides on the C:\ drive of the computer). This is typically the case in OPAS SQL-Server installations.

This set of steps will make the workstation copy of OPAS match that of the Server

1. While sitting at the workstation, double-click the **Update.exe** file – this is the same file you used on the Server in step one.
2. At the Welcome screen, click Next
3. At the Choose Destination Location window, accept the default C:\Program Files\OPAS directory (that is, the C:\ drive of the computer at which you are sitting). If you've not installed OPAS to that folder, click the Browse... to locate it.

Next, you must install the necessary Windows support files to the workstation. This is because the OPAS update involves a Major Update – version 7.14 to 8.17 – the skip from 7 to 8 means that OPAS is using a new set of Microsoft Visual FoxPro tools. The file to achieve this is called **WorkstationSetup.exe**

4. While sitting at the workstation, find the **WorkstationSetup.exe** file and double-click it to start it.
5. At the Welcome screen, click Next
6. At the Choose Destination Location window, accept the default location of C:\Program Files\OPAS
7. At the Ready to Install Window, click Next

The Workstation Setup routine will copy the necessary files to the workstation's Windows folder. You may be prompted to **reboot** the workstation and should do so.

You are now ready to use OPAS on this workstation!

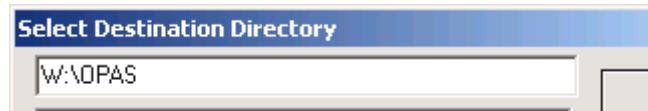
If OPAS is *not* installed on each Workstation

Use this set of steps if OPAS is installed **only** on the central server and each workstation runs OPAS.EXE on the server.

You must install the necessary Windows support files to the workstation. This is because the OPAS update involves a Major Update – version 7.14 to 8.17 – the skip from 7 to 8 means that OPAS is using a new set of Microsoft Visual FoxPro tools. The file to achieve this is called **WorkstationSetup.exe**

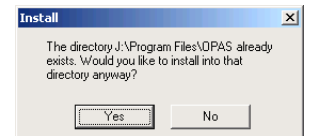
The most efficient way to install this file is to copy it on to your server, in the main OPAS directory, you can then access it via Windows Explorer or the Start | **Run** buttons.

1. While sitting at the workstation, find the **WorkstationSetup.exe** file and double-click it to start it.
2. At the Welcome screen, click Next
3. At the Choose Destination Location window, click the Browse button and locate your OPAS installation on the **Server**. **Note** – the utility may try to put an extra “\OPAS” at the end of the destination directory. Just check the field at the top of the screen and make sure it’s correct before you proceed.



HINT: You'll know you have the right directory location if you see the following message after you click the OK button. The message at right indicates that you have chosen the **correct** directory

4. At the **Ready to Install** window, click Next



The Workstation Setup routine will copy the necessary files to the workstation's Windows folder. You may be prompted to **reboot** the workstation and should do so.

You are now ready to use OPAS on this workstation!